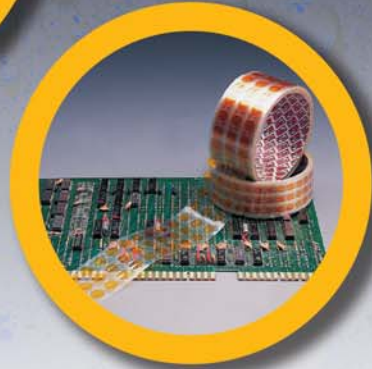


Keeping Technology Lines Moving



Stencil cleaning rolls are essential components in keeping screen printing machines clean and performing optimally. Individual manufacturers configure their printing machines differently which dictates that specific stencil cleaning rolls must be used depending on the machine. It is imperative that these specifications are replicated exactly when choosing a stencil cleaning roll. In particular, the quality of the wiping fabric must be sufficient to absorb solder paste and other contaminants, while remaining sufficiently porous for the vacuum unit to function.



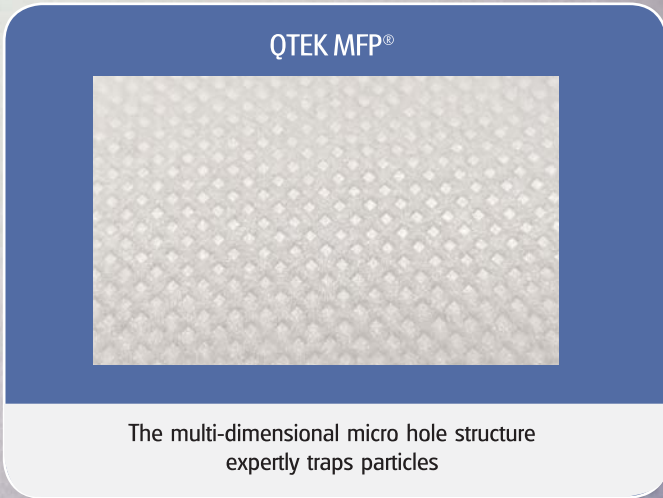
Custom Roll Designs

QTEK stencil cleaning rolls are available for all screen printing machines. We ensure manufacturers specifications are matched exactly giving you a stencil cleaning process you can trust.

QTEK rolls are made with the most absorbent and durable wiping fabrics available and are especially low linting. Below are some of our more popular rolls, however, please let us know the specifications for the cleaning roll you require.

Part No	Printer	"A" Core Width (mm)	"B" Core ID (mm)	"C" Core OD (mm)	"D" Roll OD (mm)	"E" Paper Length (m)	"F" Paper Width (mm)	Core Type	Material	Notch
2300	MPM	456	19.4	25.4	63	11	444	Cardboard	Cleanmaster	No
2300MFP	MPM	456	19.4	25.4	63	11	444	Cardboard	MFP	No
2312MFP	MPM	456	19.2	25.4	63	11	350	Cardboard	MFP	No
2660	DEK	530	19.6	22.6	58	11	515	Perspex	Cleanmaster	Yes
2660MFP	DEK	530	19.6	22.6	58	11	515	Perspex	MFP	Yes
2662	DEK	530	19.6	22.6	58	11	400	Perspex	Cleanmaster	Yes
2662MFP	DEK	530	19.6	22.6	58	11	400	Perspex	MFP	Yes
2875	EKRA	400	12.7	19	48	8.5	400	Cardboard	Cleanmaster	No
2878	EKRA	500	12.7	19	53	10	500	Cardboard	Cleanmaster	No
2812MFP	Panasonic	380	20	25	60	10	370	Cardboard	MFP	No
2835MFP	Panasonic	350	38.1	41.1	105	30	350	Cardboard	MFP	No
2838MFP	Panasonic	410	38.1	41.1	105	30	410	Cardboard	MFP	No
2940MFP	Yamaha	440	25.4	29	82	20	440	Cardboard	MFP	No

QTEK MFP® A GAME CHANGER



QTEK Micro Fine Pitch Stencil Cleaning Rolls

QTEK Micro fine pitch stencil cleaning rolls outperform all other stencil rolls in terms of cleaning ability, absorbency and chemistry compatibility. They are expertly designed to boost productivity & yield, minimise defects and reduce manufacturing costs.

The Benefits

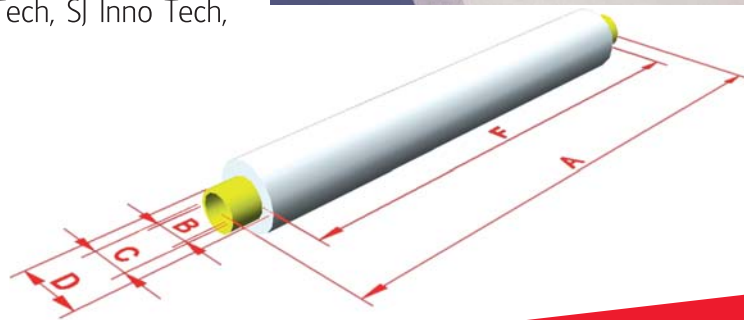
An innovation in screen printer stencil cleaning, Micro-Fine Pitch Stencil cleaning rolls are made of white, non-woven Polypropylene :

- Vastly reduces chemical solution at point of cleaning compared to other screen rolls
- Extremely low linting material
- Multi-dimensional texture traps foreign particles
- Enhanced fabric flexibility and softness improves cleaning of solder paste and particles on the stencil
- Snag and abrasion resistant – will not release particles or fibres into the environment
- No binders, surfactants or other chemical additives

Take The QTEK Challenge

Witness the improvement in your screen-printing process. Contact us directly or through your local distributor to arrange a sample.

QTEK is a converter of Cleanmaster® wiping fabric for use in underscreen cleaning mechanisms. Cleanmaster® is a non-woven, extra strength material that has excellent wetting characteristics, which make it ideal for absorbing paste, solvents and adhesives. QTEK is making Cleanmaster® material available for a variety of stencil printer cleaning units. Our product table of stencil cleaning rolls denote the most popular rolls we produce. Please contact us for custom roll requirements and for additional machine types such as Fuji, Speedprint, Samsung, SMTech, SJ Inno Tech, Juki and Sony.



CleanMaster

The QTEK range of pre-saturated wipes are manufactured with an exceptionally high-quality polyester wipe roll. Reusable tubs with flip-top lids contain the pre-saturated perforated roll wipe and are ideal for work stations in production areas. The tubs of 100 wipes are complimented by replacement refill packs of 100 pre-sat wipes which are intended to provide a cost & environmental saving for continuous usage.



Stencil Clean Fluid, Wipes and Spray

- Formulated specifically for the removal of stencil contaminants.
- Has a particular affinity for solder paste residue.
- Removes contaminants cleanly and without scouring the stencil surface.
- Odour-free and evaporates quickly to leave surfaces clean and dry.
- Typical uses: Underscreen cleaning, misprinted PCBs, spatulas, printer interiors.

Part No.	Description
3210	Stencil Clean Pre-Saturated Wipes (Tub of 100)
3211	Stencil Clean Pre-Saturated Wipes (Refill Pkt. of 100)
6250	Stencil Clean Spray (500ml)
6254	Stencil Clean Spray (1 Litre)
4205	Stencil Clean Fluid (5 Litre)



Pure IPA Wipes, Fluid and Spray

- 100% Isopropyl alcohol.
- Leaves surfaces and product free of contaminants
- No residue, no rinsing and 100% VOC, ensuring evaporation without a trace
- Extremely low linting and highly absorbent wipes
- General purpose cleaner that can be used throughout the production process

Part No.	Description
3310	Pure IPA Pre-Saturated Wipes (Tub of 100)
3311	Pure IPA Pre-Saturated Wipes (Refill Pkt. of 100)
6350	Pure IPA Spray (500ml)
6354	Pure IPA Spray (1 Litre)
4605	Pure IPA Fluid (5 Litre)



IPA/DI Fluid, Wipes and Spray

- 70% Isopropyl alcohol, 30% de-ionised water
- General purpose cleaner that can be used throughout a production process
- Evaporates quickly without trace after cleaning has been completed
- Leaves surfaces and items free of contaminants

Part No.	Description
3410	IPA/DI Pre-Saturated Wipes (Tub of 100)
3411	IPA/DI Pre-Saturated Wipes (Refill Pkt. of 100)
3412	IPA/DI Pre-Saturated Wipes (Bucket of 250)
6450	IPA/DI Spray (500ml)
6454	IPA/DI Spray (1 Litre)
4405	IPA/DI Fluid (5 Litre)

The QTEK range of cleaning fluids and wipes are saturated with premium solvents in easy-to-use and unique flip-top containers. Our wipe products are impregnated with a chemistry designed specifically for industrial cleaning tasks, such as solder paste removal, glass cleaning, or bench/worktop sterilisation. All QTEK solvents are available in 500ml or 1 litre spray bottles with a convenient trigger-action & on/off switch.



Supasat® IPA-DI Cleanroom Wipes

- Available in 100% continuous filament polyester or hydro-entangled poly-cellulose material
- Pre-saturated with 0.2µ filtered 70%/30% IPA/DI fluid
- Low particles, fibres, ions and extractables
- Ideal for use in Class 10 cleanroom environments
- Robust design allows for deep, aggressive cleaning
- Suitable for the removal of stubborn contaminants
- Aluminium lined resealable pouch

Part No.	Description
3415	Supasat® Poly-cellulose IPA-DI Wipes 9" x 9" (Pack 50)
3416	Supasat® Polyester IPA-DI Wipes 9" x 9" (Pack 50)



Opti Clean Wipes and Spray

- Ideal for use on VDU screens, glass components, lenses and inspection/metrology equipment.
- Works quickly and effectively to keep glass/ optical surfaces crystal clear.
- No rinse necessary, perfect for cleaning after final assembly.

Part No.	Description
3810	Opti Clean Pre-Saturated Wipes (Tub of 100)
3811	Opti Clean Pre-Saturated Wipes (Refill Pkt. of 100)
6850	Opti Clean Spray (500ml)



Machine Clean Wipes

- Cleans parts quickly and effectively after exposure to industrial dirt and grime
- Particularly effective on stains such as glues, solders or greases
- Ideal for use on a production line, reducing down time when equipment and parts require cleaning
- Fortified with a citrus scent for a pleasant and fresh odour

Part No.	Description
3910	Machine Clean Pre-Saturated Wipes (Tub of 100)
3911	Machine Clean Pre-Saturated Wipes (Refill Pkt. of 100)

Choosing a wipe that is ideally suited to your production needs can be difficult. Manufacturers tend to confuse by focusing on the wipe material, rather than its application. QTEK make the choice simple and effective by introducing their range of wipes, designed for specific production cleaning requirements.



Adhesive Remover Fluid, Wipes and Spray

- Removes misprinted adhesives and pastes before they cure and attach themselves to screens or PCBs.
- Strong, yet non-destructive cleaning product, fast evaporating and odour-free.
- Ideal accompaniment to in-line cleaning systems where adhesives are dispensed.

Part No.	Description
3110	Adhesive Remover Pre-Saturated Wipes (Tub of 100)
3111	Adhesive Remover Pre-Saturated Wipes (Refill Pkt. of 100)
6150	Adhesive Remover Spray (500ml)
4105	Adhesive Remover Fluid (5 Litre)



Industrial Hand Clean Wipes

- Cleans hands quickly and effectively after exposure to industrial dirt and grime.
- Particularly effective on stains such as glues, solders or greases.
- Ideal for use on a production line, reducing the need to leave the line to scrub up.
- Fortified with a citrus scent for a pleasant and fresh odour.
- Hygienic and effective addition to your company's health and safety policy.

Part No.	Description
3720	Industrial Hand Clean Pre-Saturated Wipes (Tub of 100)
3721	Industrial Hand Clean Pre-Saturated Wipes (Refill Pkt. of 100)



ESD Mat & Worktop Clean Wipes and Spray

- Multi-purpose static dissipative cleaner designed to extend the life of ESD mats and work surfaces
- Easy to use, spray-on or wipe off
- Contains no alkali or ammonia
- Removes flux, residue, oil marks, grease and others contaminants

Part No.	Description
3610	ESD Mat & Worktop Clean Pre-Saturated Wipes (Tub of 100)
3611	ESD Mat & Worktop Clean Pre-Saturated Wipes (Refill Pkt. of 100)
6650	ESD Mat & Worktop Clean Spray (500ml)
6654	ESD Mat & Worktop Clean Spray (1 Litre)

QTEK dry wipes are made from tough, durable materials that are resistant to tearing or disintegration, but also will not scratch or scrape sensitive surfaces. Made from highly absorbent non-woven fabrics for removing spills or misprints, our range of wipes are low linting and have excellent wetting characteristics. Each wipe is effective both as a dry wipe and for using together with cleaning chemistries.



SMT Wipes

- Ideal as a general purpose cleanroom wipe.
- Ultralow particle generation and chemical extractables.
- Excellent tensile, tear and bursting strengths.
- Superabsorbent non-woven wipe absorbs up to four times its own weight.
- Manufactured using advanced hydro-entanglement technology.
- Cleanroom packed and double bagged.

Part No.	Description	Size	Wipes/Pack
5709	SMT Wipe	225mm x 225mm (9" x 9")	300
5712	SMT Wipe	300mm x 300mm (12" x 12")	150



Cleanmaster Wipe Rolls

- Perforated roll wipes for manual cleaning of screen printing stencils.
- Made from industry-leading materials.
- Low linting and very absorbant and Highly effective cleaning properties.
- The rolls can be mounted on bench or wall stands for easy dispensing if required.
- Polyester 45%, Cellulose 55%.
- Manufacturing process in compliance with ISO 9001 quality systems.
- 300 sheets per roll.

Part No.	Description	Wipe Size	Unit
5309	Cleanmaster Wipe Roll	200mm x 260mm	Roll 300
5314	Cleanmaster Wipe Roll	300mm x 350mm	Roll 300



Multipurpose Wipe Roll Blue

- Perforated roll wipes made from industry-leading materials
- Extremely tough and durable wipe in both wet and dry applications
- Exceptionally low-linting and contains no additives or binders
- Soaks up to several times its weight in water and effectively absorbs oil and solvents
- Rolls can be mounted on bench or wall stands for convenient dispensing
- Ideal for a wide range of applications including automotive, machinery repair, aviation, manufacturing and more
- Polyester 45% , Cellulose 55%
- Manufacturing process in compliance with ISO 9001 Quality systems.
- 500 sheets per roll.

Part No.	Description	Colour	Wipe Size	Unit
5326	Multipurpose Wipe Roll	Blue	380mm x 300mm	Roll 500

Splicing Procedure



STEP 1
Put SMT Splice Clip into Tape Splicing Tool



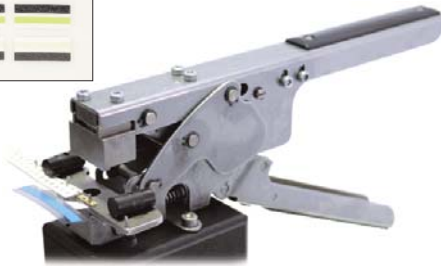
STEP 2
Place new component reel on splice clip



STEP 3
Put depleted reel end into tool, clamp and compress handle of splice tool



STEP 4
Remove backing paper from splice tape and join cover tapes with splice tape



Tape Splicing Tool

- Used for attaching the end of a depleted reel of components to the beginning of a new reel.
- Avoids unnecessary production stoppages in pick and place machines.
- The tool rivets a brass splice clip to the ends of both reels, creating a strong, durable join.
- Locating pins ensure accurate alignment.
- An adhesive splice tape is then attached to the cover tapes to complete the join.

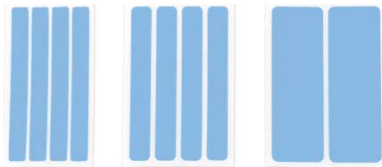
Part No.	Description
TST50	Tape Splicing Tool

Splice Tape Scissors

Specialised tool which uses locating pins attached to the side of the scissors to guarantee accurate and aligned cutting of component reels each and every time.



Part No.	Description
TSC50	Splice Tape Scissors



Splice Tapes

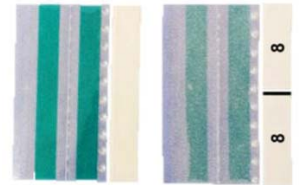
- Join cover tapes of component rolls that have been spliced together with brass splicing clips.
- Precise attachment and alignment at both ends.
- Available in short, ready-for-use lengths.

Part No.	Description	Colour	Width	Unit
SST408	Single Splice Tape	Blue	8mm	4000
SST412	Single Splice Tape	Blue	12mm	4000
SST416	Single Splice Tape	Blue	16mm	4000
SST432	Single Splice Tape	Blue	32mm	1000

Additional sizes & yellow tapes are available upon request

Samsung Splice Tape

- Double splice tape green with clear backing suitable for Samsung pick and place machines.
- This splice tape is used for jointing carrier tapes in the SMT process,
- Guarantees perfect and reliable joints.
- Joining is accomplished without any tools or fixtures, with precise pitch spacing, using convenient, pre-cut lengths of tape.



Part No.	Description	Width	Unit
DST308	Double Splice Tape - Green	8mm	500
DST312	Double Splice Tape - Green	12mm	500
DST316	Double Splice Tape - Green	16mm	500
DST324	Double Splice Tape - Green	24mm	250

Double Splice Tape

- Guarantees perfect and reliable joints.
- Joining is accomplished without any tools or fixtures, with precise pitch spacing, using convenient, pre-cut lengths of tape.



Part No.	Description	Width	Unit
DST108	Double Splice Tape	8mm	500
DST112	Double Splice Tape	12mm	500
DST116	Double Splice Tape	16mm	500
DST124	Double Splice Tape	24mm	250

Additional sizes & ESD tapes are available upon request



Combined Splice Tape & Clip

- Convenient, Labour-saving solution.
- High accuracy connecting with splice tool and easier to manage material.
- Single operation combines both clip and splice tape on the one piece, eliminating the awkward handling problems commonly associated with the splicing process.

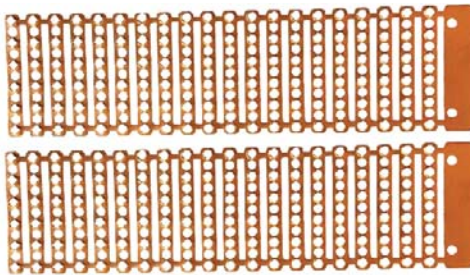
Part No.	Description	Width	Unit
CST108	Combined Splice Tape & Clip	8mm	500
CST112	Combined Splice Tape & Clip	12mm	500
CST116	Combined Splice Tape & Clip	16mm	500
CST124	Combined Splice Tape & Clip	24mm	250



SMT Splicing Tool

- Rivets a brass clip to the end of both reels
- For use with TSC375 SMT Splice Frame Clips improving efficiency of process
- Avoids unnecessary production stoppages in pick and place machines
- Creates durable joints
- Ensures accurate alignment with locating pins

Part No.	Description
TST80	SMT Splicing Tool



SMT Splice Frame Clips

The QTEK SMT Splice Frame Clips are made up of 20 0.1mm bandoleer splice shims made from phosphor copper.

- SMT Splice Frame Clips must be used with QTEK's SMT Splicing Tool
- Good jointing reliability
- For use with larger sized carrier tapes
- Stapler slice clips applicable for carrier tapes of 8 x 72mm
- 20 clips/frame, 25 frames/box, 8 boxes/case, 4,000 clips/case

Part No.	Description	Unit
TSC375	SMT Splice Frame Clips Case	4000



SMD Splice Clips

Used with tape splicing tool to join end of old component reel to beginning of new reel.

Part No.	Description	Unit
TSC475	SMD Splice Clips	4000



Cover Tape Extender

- Adds an extra 380mm (15") starter to cover tape of pick and place component reels.
- Saves components being wasted or discarded when starting tape through feeder.
- Enables use of tapes in full reels or short sections without loss.
- Strong adhesive bond between extender and original tape ensures they will not separate, even after prolonged time under tension.

Part No.	Description	Width	Unit
CTE108	Tape Extender	8mm	500
CTE112	Tape Extender	12mm	500
CTE116	Tape Extender	16mm	500
CTE124	Tape Extender	24mm	250

Additional sizes & ESD available upon request

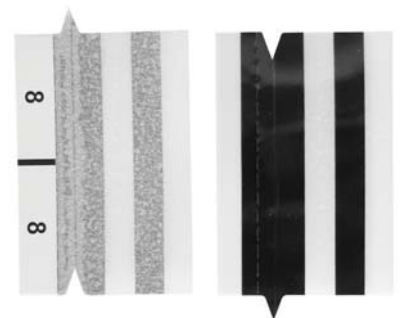


Tape Extender New PET Type

A soft polyester film construction allows this new PET type film cover tape extender to pass easily through pick & place machines

- Release paper with strong adhesion
- Tensile strength (H/25*25mm) time >100

Part No.	Description	Width	Unit
CTE208	Tape Extender New PET	8mm	500
CTE212	Tape Extender New PET	12mm	500
CTE216	Tape Extender New PET	16mm	500
CTE224	Tape Extender New PET	24mm	250
CTE232	Tape Extender New PET	32mm	250



Panasonic Splice Tape

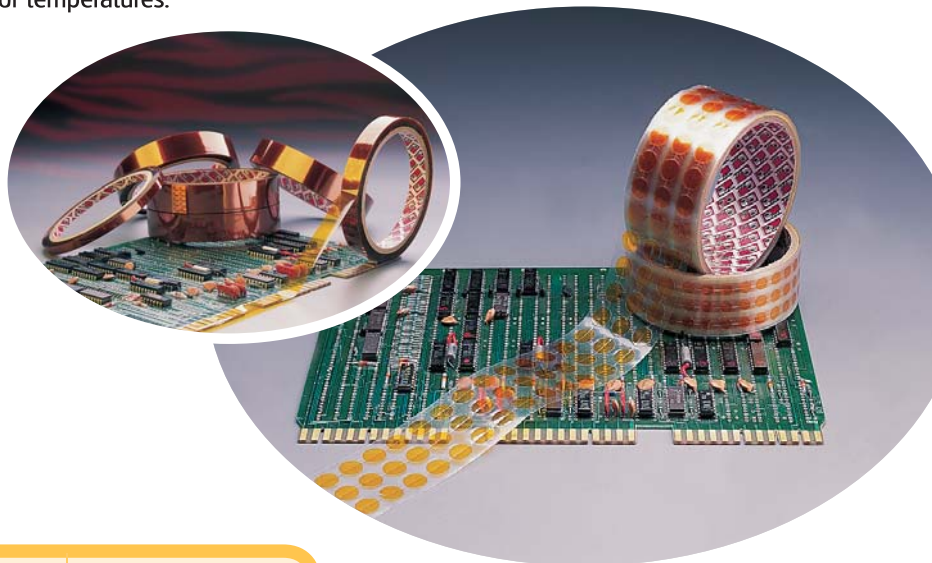
- Ideal for splicing new reels to old reels, for Panasonic machines equipped with an intelligent feeder.
- Contains a sensor, which records when, and what kind of component reel is loaded.
- Available for all component reel sizes.

Part No.	Description	Colour	Width	Unit
SST508	Panasonic Splice Tape	Black	8mm	1000
SST512	Panasonic Splice Tape	Black	12mm	1000
SST516	Panasonic Splice Tape	Black	16mm	500
SST524	Panasonic Splice Tape	Black	24mm	250

QTEK Masking Tape is a polyimide, pressure-sensitive, adhesive tape with silicone resin which shows excellent dielectric insulation properties, high heat resistance and excellent solvent resistance. This makes it ideal for masking gold fingers of printed circuit boards during wave solder or solder dip process. These properties result in a tape with remarkable dimensional stability and excellent electrical and physical properties over a wide range of temperatures.

High Temperature Masking Discs

QTEK High Temperature Discs are used for solder wave masking and electrical insulation. They are composed of a polyimide film masking dots with silicone adhesive on a clear easy-release liner. QTEK High Temperature Discs are both flame and chemical resistant.



QTEK Discs are available in the following sizes

Part No.	Width	Discs per Roll
PD 0605	6mm	1000
PD 0805	8mm	1000
PD 1005	10mm	1000
PD 1205	12mm	1000

Technical Data

Item	Unit	Property Data	Remark
Structure	-	Silicon Adhesive Polyimide Film	
Base Film Thickness	µm	25	
Total Thickness	µm	70+2	-
Peel Strength	gf/in	700+50	-
Tensile Strength	kgf/mm ²	>7	
Elongation	%	>50	
Heat Resistance	-	Good	230°/1hrs Heating Oven
Chemical Resistance	-	Good	20% HCl, Na OH/20hrs
ESD Properties	-	Static Dissipative	

QTEK High Temperature Masking Tape

Part No.	Width	Length
PT 0633	6mm	33M
PT 0933	9mm	33M
PT 1233	12mm	33M
PT 1533	15mm	33M
PT 1933	19mm	33M
PT 2533	25mm	33M
PT 3033	30mm	33M
PT 4033	40mm	33M

ESD-Safe High Temperature Masking Tape

Part No.	Width	Length
PT 0633ESD	6mm	33M
PT 0933ESD	9mm	33M
PT 1233ESD	12mm	33M
PT 1533ESD	15mm	33M
PT 1933ESD	19mm	33M
PT 2533ESD	25mm	33M

Additional sizes are available upon request.



Fluid Dispenser Pens



Part No.	Description
FP 200	Flux Pen, ESD safe
FP 202	Acrylic Chisel Nib
FP 204	Acrylic Bullet Nib
FP 206	Acrylic Point Nib
FP 208	Polyester Chisel Nib
FP 300	Fluid Dispenser Pen
FP 302	Replacement Nylon Tip
FP 304	Replacement Felt Tip



Corporate Overview

QTEK Manufacturing Ltd. is a leading global manufacturer of consumables for the electronics and associated industries. Our headquarters are in Galway, Ireland and we also have a manufacturing facility in Guadalajara, Mexico.

QTEK has established an extensive network of distributors throughout Europe, North America and Asia, providing a focused range of quality products designed to improve manufacturing efficiencies and guarantee product quality.



Global Footprint



MEXICO

Qtek Mexico S, de R.L de C.V.
Camino a la Tijera 806 A-1,
Tlajomulco de Zúñiga, Jalisco.
C.P. 45645, Mexico
sales@qtek.com

IRELAND

Qtek Manufacturing Ltd.
Unit 7,
Glenascaul Technology Park,
Oranmore, Galway,
H91 F589, Ireland.
sales@qtek.com

HUNGARY

QTEK International
Kazincy u. 124/A
Törökbalint, 2045 Hungary.
sales@qtek.com

ROMANIA

QTEK International
Ghiocelilor NR 3, Dumbravita
Timis, 307160, Romania.
sales@qtek.com

Keeping Technology Lines Moving



Distributed by:

